

LodeRailTM

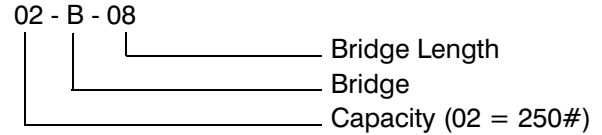
COMPONENTS

COMPONENTS

LodeRail™

BRIDGES

PART NUMBER EXPLANATION:



Bridges Are Painted Yellow

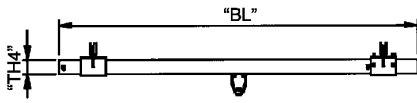
For non-standard bridge lengths use the next longer length for pricing purposes.

If installing multiple bridges on one runway, the use of a floating buffer may be required. Refer to page 73 for floating buffers.

PRICE INCLUDES: Bridge, Hoist Trolley, End Trucks, End Stops Bumpers with hardware.

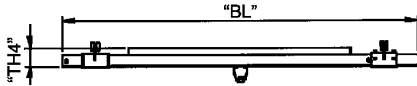
NOT INCLUDED: Festooning (cable, hose, festoon trolleys, or clamps).

BRIDGE ASSEMBLY



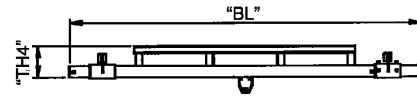
LENGTH	CAPACITY	TRACK SERIES				
		250#	500#	1000#	2000#	4000#
8'-0"	PART NO.	02B08	05B08	10B08	20B08	--
	PRICE	\$862	\$967	\$1,118	\$1,579	--
	TH4	2 3/8"	2 3/8"	3"	4 3/8"	--
	WEIGHT	67#	67#	109#	195#	--
10'-0"	PART NO.	--	--	--	20B10	--
	PRICE	--	--	--	\$1,676	--
	TH4	--	--	--	4 3/8"	--
	WEIGHT	--	--	--	217#	--

BRIDGE ASSEMBLY



LENGTH	CAPACITY	TRACK SERIES				
		250#	500#	1000#	2000#	4000#
10'-0"	PART NO.	02B10	05B10	10B10	20B10	--
	PRICE	\$909	\$1,025	\$1,190	--	--
	TH4	4 3/8"	4 3/8"	5 1/2"	--	--
	WEIGHT	93#	93#	147#	--	--
15'-0"	PART NO.	--	--	--	20B15	--
	PRICE	--	--	--	\$1,934	--
	TH4	--	--	--	6 7/8"	--
	WEIGHT	--	--	--	332#	--

BRIDGE ASSEMBLY



LENGTH	CAPACITY	TRACK SERIES				
		250#	500#	1000#	2000#	4000#
15'-0"	PART NO.	02B15	05B15	10B15	---	40B15
	PRICE	\$1,034	\$1,169	\$1,362	---	\$3,500
	TH4	10"	10"	11"	---	18"
	WEIGHT	152#	152#	208#	---	703#
20'-0"	PART NO.	02B20	05B20	10B20	20B20	40B20
	PRICE	\$1,159	\$1,317	\$1,556	\$2,138	\$3,615
	TH4	10"	10"	11"	12"	18"
	WEIGHT	196#	196#	264#	452#	825#
23'-0"	PART NO.	02B23	05B23	10B23	20B23	40B23
	PRICE	\$1,231	\$1,400	\$1,661	\$2,271	\$4,406
	TH4	10"	10"	11"	12"	18"
	WEIGHT	223#	223#	297#	509#	893#
28'-0"	PART NO.	02B28	05B28	10B28	20B28	40B28
	PRICE	\$2,327	\$2,447	\$2,597	\$3,649	\$4,810
	TH4	12 3/8"	12 3/8"	13 7/8"	16"	20"
	WEIGHT	343#	343#	508#	820#	1005#
34'-0"	PART NO.	---	05B34	10B34	20B34	---
	PRICE	---	\$2,650	\$2,932	\$3,939	---
	TH4	---	14 3/8"	17"	18"	---
	WEIGHT	---	402#	604#	940#	---

Weight and dimensions are approximate and may change without notice.

(5-15-06)



MIXED CAPACITY SYSTEMS

Mixed capacity systems allow multiple bridges to be used on a system without de-rating bridges or using bridge buffers. For example, using mixed capacity end trucks, two 250# bridges, can run in 500# runways, allowing full use of both bridges without overloading the system.

By mixing bridges of different sizes and capacities, mixed capacity systems offer easier movement, reduced dead weight, and reduced cost.

WARNING: The sum of the capacities of the bridges cannot exceed the capacity of the runways without the addition of buffer assemblies. If in doubt contact the factory.

Systems having more than two bridges require special festooning arrangements. Refer to page 74 or consult the factory.

How to figure a price of a mixed capacity system. (Using a 1000# capacity system as an example)

- 1) Start with the base price of the system, capacity, bridge length, and runway length required. (capacity = total capacity desired, i.e. 2 - 500# capacity cranes require a 1000# capacity system.)
- 2) From this section (page 62) deduct the price of the #1000 capacity bridge.
- 3) From this section (page 62) add the price for 2 - 500# capacity bridges of the proper bridge length. (This includes: bridge, end trucks, hoist trolley, and end stops.
- 4) Add additional festooning required, using page 75 of this section for pricing. (This includes flat cable, festoon trolleys, cable clamps, and festoon stack-up section.)
- 5) Add a base charge of \$215 for each bridge added.

Example: Required: A 1000# capacity ceiling mounted crane system with two #500 bridges with electric hoists. The bridge length (BL) needs to be 20' long, the runway 63' long, and the hanger support distance (SD) 20'. Both bridges need to be able to travel the full length of the runway.

Solution: (1) Calculate the price for a single crane system based on a total system capacity (since both bridge are capable of being in the same span) of 1000#. The Model number with 20' support centers, would be 1000-C-20-63-20 (from Ceiling Mounted Crane section, page 46), at a price of \$8,020.

(2) Deduct the price of the 1000# capacity bridge Cat #10B20 (from page 62), of \$1,556.

(3) Add the price for two 500# capacity bridges Cat #05B20 (from page 62) of
 $2 \times \$1,317 = \$2,634$.

(4) Add additional festooning as needed (see page 75, this section), of \$371.

(5) Add 'Modification Charge' of $(2 \times 215) \$430$. One modification charge for each bridge.

Note: To festoon both bridges, cable should be strung from opposite ends of the system. Also, check to determine that the bridges do not exceed the equivalent center load criteria of the runway.

\$	8,020	Base Price
-	1,556	Deduct 1000# Cap. bridge
+	2,634	Add 2 - 500# Cap. bridges (2 @ \$1,317)
+	371	Festoon adder (use festoon deduct)
+	430	Add modification charge
<hr style="border-top: 3px double #000;"/>		
\$	9,899	Total List Price



RUNWAYS

Runways are sold as single pieces, not in pairs.

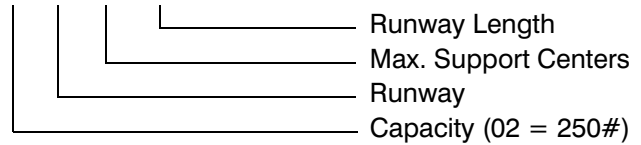
Runways are painted yellow.

For non-standard runway lengths, use the next longer length for pricing purposes.

NOT INCLUDED: hangers, end stops, festoon trolleys, festoon clamps, cable, splice joints, touch up paint, or drilled holes.

PART NUMBER EXPLANATION:

02 - R - 06 - 10



PLAIN STEEL

(6'-0 Support Centers)

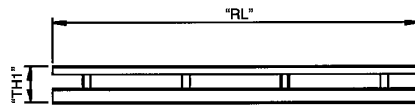
		PLAIN STEEL (6' Support Centers)				
LENGTH (L)	CAPACITY	250#	500#	1000#	2000#	4000#
		TH1	2 3/8"	2 3/8"	3"	4 3/8"
10'-0	PART NO.	02P0610	05P0610	10P0610	20P0610	20P0610
	PRICE	\$125	\$166	\$245	\$288	\$288
	WEIGHT	40#	40#	61#	108#	108#
11'-6	PART NO.	02P06116	05P06116	10P06116	20P06116	20P06116
	PRICE	\$143	\$190	\$280	\$332	\$332
	WEIGHT	46#	46#	71#	124#	124#
13'-0	PART NO.	02P0613	05P0613	10P0613	20P0613	20P0613
	PRICE	\$163	\$216	\$317	\$375	\$375
	WEIGHT	52#	52#	80#	140#	140#
20'-0	PART NO.	02P0620	05P0620	10P0620	20P0620	20P0620
	PRICE	\$197	\$279	\$435	\$523	\$523
	WEIGHT	80#	80#	123#	215#	215#
21'-6	PART NO.	02P06216	05P06216	10P06216	20P06216	20P06216
	PRICE	\$212	\$299	\$469	\$562	\$562
	WEIGHT	86#	86#	132#	232#	232#
23'-0	PART NO.	02P0623	05P0623	10P0623	20P0623	20P0623
	PRICE	\$232	\$335	\$489	\$696	\$696
	WEIGHT	92#	92#	141#	248#	248#



TRUSSED TRACK

(20' Support Centers)

		TRUSSED STEEL (20' Support Centers)				
LENGTH (L)	CAPACITY	250#	500#	1000#	2000#	4000#
		TH1	10"	10"	11"	12"
10'-0	PART NO.	02R2010	05R2010	10R2010	20R2010	40R2010
	PRICE	\$289	\$370	\$393	\$431	\$687
	WEIGHT	89#	89#	111#	186#	233#
11'-6	PART NO.	02R20116	05R20116	10R20116	20R20116	40R20116
	PRICE	\$333	\$426	\$453	\$496	\$687
	WEIGHT	103#	103#	128#	215#	271#
13'-0	PART NO.	02R2013	05R2013	10R2013	20R2013	40R2013
	PRICE	\$377	\$481	\$510	\$561	\$895
	WEIGHT	110#	110#	175#	240#	250#
20'-0	PART NO.	02R2020	05R2020	10R2020	20R2020	40R2020
	PRICE	\$499	\$664	\$696	\$803	\$1,230
	WEIGHT	177#	177#	222#	372#	467#
21'-6	PART NO.	02R20216	05R20216	10R20216	20R20216	40R20216
	PRICE	\$552	\$712	\$760	\$870	\$1,351
	WEIGHT	190#	190#	237#	389#	499#
23'-0	PART NO.	02R2023	05R2023	10R2023	20R2023	40R2023
	PRICE	\$557	\$721	\$785	\$914	\$1,430
	WEIGHT	204#	204#	253#	418#	537#



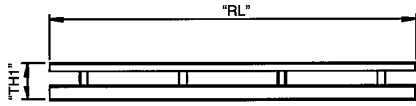
Weight and dimensions are approximate and may change without notice. (Continued next page)

(5-15-06)



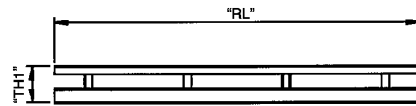
RUNWAYS (continued)

TRUSSED TRACK
(25' Support Centers)



		TRUSSED STEEL (25' Support Centers)				
LENGTH (L)	CAPACITY	250#	500#	1000#	2000#	4000#
		TH1	12 3/8"	12 3/8"	13 7/8"	15 3/8"
25'-0	PART NO.	02R2525	05R2525	10R2525	20R2525	40R2525
	PRICE	\$876	\$991	\$1,040	\$1,399	\$1,957
	WEIGHT	228#	228#	351#	469#	589#
26'-6	PART NO.	02R25266	05R25266	10R25266	20R25266	40R25266
	PRICE	\$911	\$1,029	\$1,079	\$1,454	\$2,034
	WEIGHT	243#	243#	373#	499#	625#
28'-0	PART NO.	02R2528	05R2528	10R2528	20R2528	40R2528
	PRICE	\$963	\$1,088	\$1,142	\$1,537	\$2,149
	WEIGHT	255#	255#	393#	525#	657#

TRUSSED TRACK
(30' Support Centers)



		TRUSSED STEEL (30' Support Centers)				
LENGTH (L)	CAPACITY	250#	500#	1000#	2000#	4000#
		TH1	14 3/8"	14 3/8"	17"	18"
30'-0	PART NO.	02R3030	05R3030	10R3030	20R3030	---
	PRICE	\$1,105	\$1,214	\$1,352	\$1,464	---
	WEIGHT	298#	298#	434#	571#	---
31'-6	PART NO.	02R30316	05R30316	10R30316	20R30316	---
	PRICE	\$1,159	\$1,274	\$1,420	\$1,538	---
	WEIGHT	311#	311#	464#	598#	---
33'-0	PART NO.	02R3033	05R3033	10R3033	20R3033	---
	PRICE	\$1,215	\$1,335	\$1,488	\$1,610	---
	WEIGHT	327#	327#	477#	628#	---

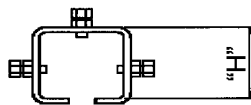
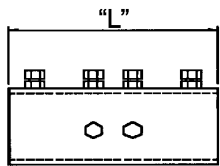
Weight and dimensions are approximate and may change without notice.

(5-15-06)

TRACK COUPLER

Track Couplers are painted black.
Both track couplers and truss splices are required when splicing trussed runways or monorails (track couplers can only be used alone on untrussed track). Price includes hardware.

**TRACK COUPLER
(with hardware)**

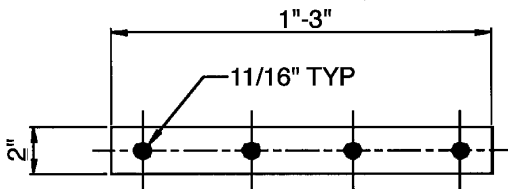


CAPACITY	250#	500#	1000#	2000#	4000#
PART NO.	02TC	05TC	10TC	20TC	20TC
PRICE	\$37	\$44	\$78	\$140	\$140
H (MAX)	2 13/16"	2 13/16"	3 1/2"	4 7/8"	4 7/8"
L	7"	7"	8"	9"	9"
WEIGHT	6#	6#	8#	17#	17#

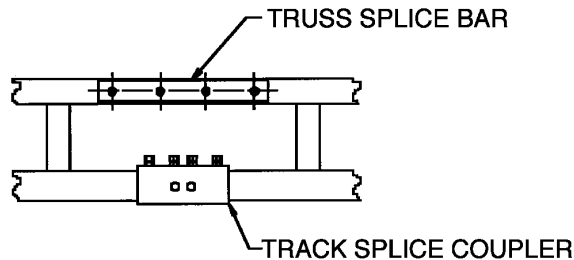
The track splice joint can only be used alone (without the truss splice) for PLAIN STEEL TRACK.
For all Truss type runways, add steel truss plate (from below) to this price.

**TRUSS SPLICE BAR
(with hardware)**

CAPACITY	250# - 4000#
PART NO.	20SB
PRICE/PAIR	\$30
WEIGHT	6#



Used to connect truss top tubes, and required on all TRUSSED STEEL sections.
Track couplers are also required.
Add the price of the truss splice plate to the track coupler above for both.
When ordering specify runway support distance.



Weight and dimensions are approximate and may change without notice.

(5-15-06)

LodeRail™ HANGERS

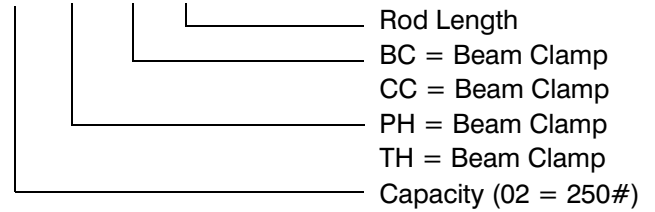
Hanger assemblies are painted black.

Includes beam clamp and hardware where applicable
 For flange widths greater than 8" use CC type clamp.
 Threaded rods include hardware.

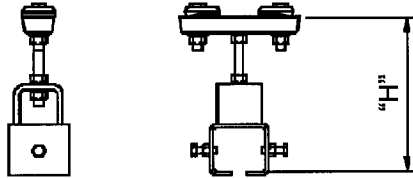
Sway bracing is required, except for flush mount applications.

PART NUMBER EXPLANATION:

02 - PH - BC - 20



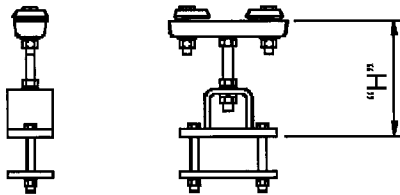
**STANDARD HANGER ASSEMBLY
PLAIN STEEL TRACK 250# - 2000#**



CAPACITY		250#	500#	1000#	2000#
No Rod	PART NO.	02PHBC	05PHBC	10PHBC	20PHBC
	PRICE	\$75	\$79	\$108	\$120
	H (Min)	8 7/16"	8 7/16"	9 1/4"	10 5/8"
	WEIGHT	10#	10#	12#	17#
20" Rod	PART NO.	02PHBC20	05PHBC20	10PHBC20	20PHBC20
	PRICE	\$91	\$97	\$125	\$138
	WEIGHT	12#	12#	14#	19#
72" Rod	PART NO.	02PHBC72	05PHBC72	10PHBC72	20PHBC72
	PRICE	\$113	\$118	\$146	\$158
	WEIGHT	17#	17#	19#	23#

Rods are 5/8" diameter. B7 Alloy

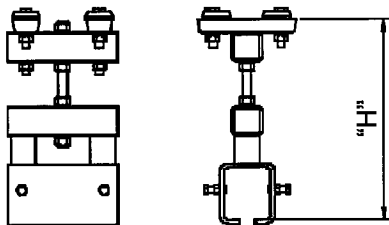
**STANDARD HANGER ASSEMBLY
TRUSSED STEEL TRACK 250# - 2000#**



CAPACITY		250#	500#	1000#	2000#
No Rod	PART NO.	02THBC	05THBC	10THBC	20THBC
	PRICE	\$76	\$82	\$92	\$98
	H (Min)	6"	6"	6 1/4"	6 1/4"
	WEIGHT	11#	11#	15#	15#
20" Rod	PART NO.	02THBC20	05THBC20	10THBC20	20THBC20
	PRICE	\$92	\$98	\$109	\$114
	WEIGHT	13#	13#	17#	17#
72" Rod	PART NO.	02THBC72	05THBC72	10THBC72	20THBC72
	PRICE	\$114	\$119	\$130	\$137
	WEIGHT	18#	18#	21#	21#

Rods are 5/8" diameter. B7 Alloy

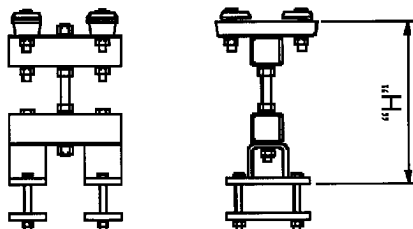
**STANDARD HANGER ASSEMBLY
PLAIN STEEL TRACK 4000#**



CAPACITY		4000#
No Rod	PART NO.	40PHBC
	PRICE	\$197
	H (Min)	1' - 3 1/2"
	WEIGHT	41#
20" Rod	PART NO.	40PHBC20
	PRICE	\$221
72" Rod	PART NO.	40PHBC72
	PRICE	\$245
WEIGHT		50#

Rods are 3/4" diameter. B7 Alloy

**STANDARD HANGER ASSEMBLY
TRUSSED STEEL TRACK 4000#**



CAPACITY		4000#
No Rod	PART NO.	40THBC
	PRICE	\$236
	H (Min)	11 1/2"
	WEIGHT	41#
20" Rod	PART NO.	40THBC20
	PRICE	\$254
72" Rod	PART NO.	40THBC72
	PRICE	\$286
WEIGHT		50#

Rods are 3/4" diameter. B7 Alloy

Weight and dimensions are approximate and may change without notice.

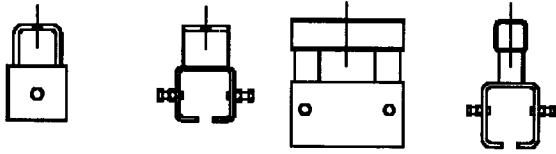
(5-15-06)

COMPONENTS

LodeRail™

HANGERS (continued) (For Cranes or Monorails)

LOWER HANGER BRACKET PLAIN STEEL track

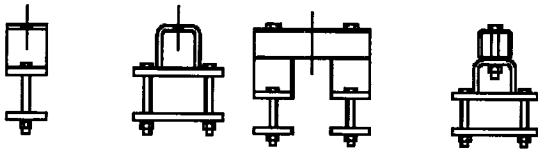


250 - 2000#

4000#

CAPACITY	250#	500#	1000#	2000#	4000#
PART NO.	02PHB	05PHB	10PHB	20PHB	40PHB
PRICE	\$34	\$34	\$49	\$57	\$129
WEIGHT	4#	4#	6#	10#	23#

LOWER HANGER BRACKET TRUSSED STEEL track

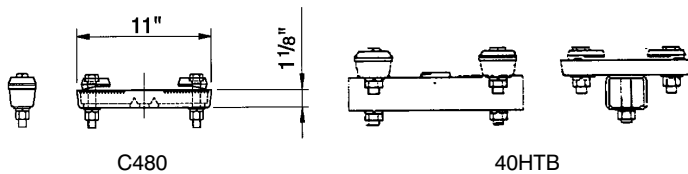


250 - 2000#

4000#

CAPACITY	250#	500#	1000#	2000#	4000#
PART NO.	02THB	05THB	10THB	20THB	40THB
PRICE	\$34	\$34	\$49	\$57	\$138
WEIGHT	5#	5#	9#	9#	24#

UPPER HANGER BRACKETS



C480

40HTB

CAPACITY	250# - 2000#	4000#
PART NO.	C480	40HTB
PRICE	\$48	\$155
WEIGHT	11#	30#

For STEEL beam flange 2 1/4" through 8".
For flange widths exceeding 8" contact factory.

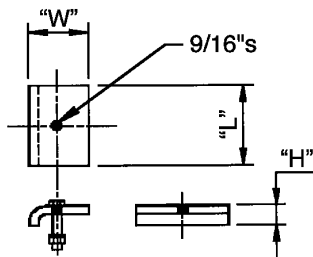
40HTB is made up from two C480 Brackets, with a load bar.

THREADED ROD WITH HARDWARE B7 ALLOY - ALL THREAD 5/8" - 11 UNC (250# - 2000# capacity) 3/4" - 10 UNC (4000# capacity)

TRACK CAP.	PRICE	LENGTH	PART NO.	WEIGHT
250#-2000#	\$19	20"	5/8ROD-20WH	3#
250#-2000#	\$38	72"	5/8ROD-72WH	7#
4000#	\$24	20"	3/4ROD-20WH	4#
4000#	\$48	72"	3/4ROD-72WH	10#

Price includes 4 hex nuts & 4 lockwashers

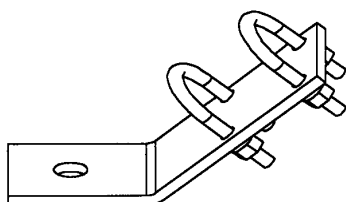
BEAM CLIP (WITH HARDWARE)



CAPACITY	250#-500#	1000# - 4000#
PART NO.	05BMC	20BMC
PRICE (Ea.)	\$8	\$12
H	1 1/8"	1 1/4"
L	3 1/2"	5"
W	3"	3 1/4"
WEIGHT	2#	3#

Beam clip is painted black and includes 1/2" bolt, nut, and lockwasher.

SWAY BRACE FITTING



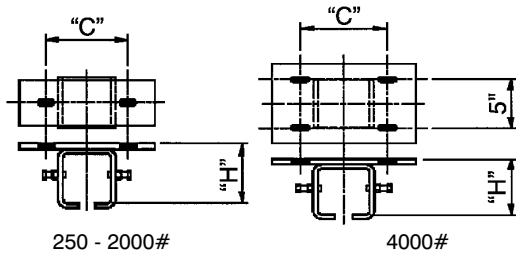
PART NO.	PRICE	WEIGHT
C562	\$19	1#

These clamps permit easy sway bracing with 1" outside diameter standard pipe (pipe by others). Clamps have a black finish. Mounting hole in fitting is drilled to accept a 5/8" mounting bolt (bolt by others). U-bolts are furnished. These fittings are NOT INCLUDED with kit cranes.

(See page 76 for Sway Brace Kit pricing.)

LodeRail™

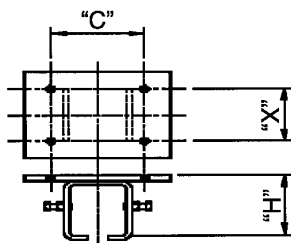
**CEILING SUPPORT BRACKET
FLUSH MOUNT PLAIN TRACK**
Used for PARALLEL mounting



CAPACITY	250#	500#	1000#	2000#	4000#
PART NO.	02SBP	05SBP	10SBP	20SBP	40SBP
PRICE	\$79	\$85	\$97	\$121	\$272
Bolt Dia.	1/2"	1/2"	1/2"	1/2"	1/2"
C					
H	3 3/16"	3 3/16"	4"	5 3/8"	5 3/8"
Flange (Min)	4"	4"	4 7/8"	5 1/8"	5 1/8"
Flange (Max)	5 1/2"	5 1/2"	6 3/8"	6 5/8"	6 5/8"
WEIGHT	6#	6#	9#	14#	15#

Bracket is painted black.
C = flange width plus 3/4"
INCLUDED: Beam clips with hardware (Page 68)

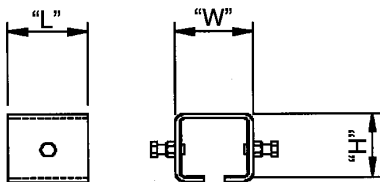
**CEILING SUPPORT BRACKET
FLUSH MOUNT PLAIN TRACK**
Used for PERPENDICULAR mounting



CAPACITY	250#	500#	1000#	2000#	4000#
PART NO.	02SBN	05SBN	10SBN	20SBN	40SBN
PRICE	\$79	\$85	\$97	\$121	\$272
H	3 3/16"	3 3/16"	4"	5 3/8"	5 3/8"
C					
WEIGHT	5#	5#	11#	16#	16#

Bracket is painted black.
X = flange width plus 3/4"
INCLUDED: Beam clips with hardware (Page 68)

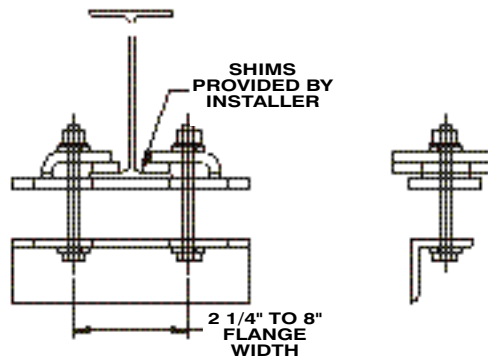
PLAIN SUPPORT BRACKET



CAPACITY	250#	500#	1000#	2000#	4000#
PART NO.	02PSB	05PSB	10PSB	20PSB	20PSB
PRICE	\$18	\$23	\$33	\$55	\$55
W	3 5/16"	3 5/16"	3 15/16"	4 9/16"	4 9/16"
H	2 13/16"	2 13/16"	3 1/2"	4 7/8"	4 7/8"
L	3 1/2"	3 1/2"	4"	4 1/2"	4 1/2"
WEIGHT	3#	4#	5#	8#	8#

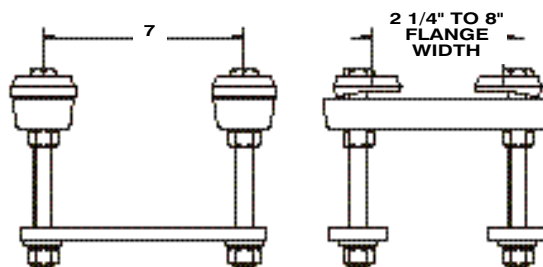
Can be welded.
Bracket is painted black.

**CEILING SUPPORT BRACKET
FLUSH MOUNT TRUSS TRACK**
Used for PARALLEL mounting



CAPACITY	250# - 4000#
PART NO.	4215FMTB-PAR
PRICE	\$251
WEIGHT	12#

**CEILING SUPPORT BRACKET
FLUSH MOUNT TRUSS TRACK**
Used for PERPENDICULAR mounting



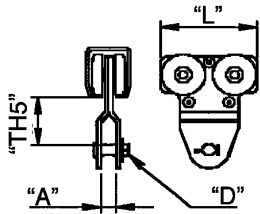
CAPACITY	250# - 4000#
PART NO.	4215FMTB-PER
PRICE	\$251
WEIGHT	18#

Weight and dimensions are approximate and may change without notice.

(5-15-06)

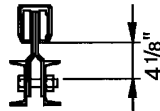
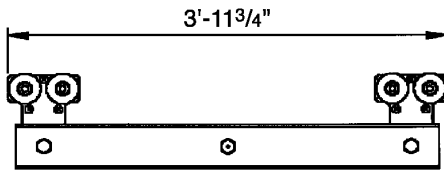
LodeRail™

HOIST TROLLEY for Steel track
250# - 4000#



CAPACITY	250#	500#	1000#	2000#	4000#
PART NO.	02TR	05TR	10TR	20TR	40TR
PRICE	\$129	\$142	\$166	\$284	\$672
A	1 1/8"	1 1/8"	1 1/4"	1 1/4"	1 1/4"
L	4 11/16"	4 11/16"	5 1/2"	7 3/4"	3'-11 3/4"
TH5	2 5/8"	2 5/8"	3 3/16"	4 1/8"	4 1/8"
D (Dia.)	11/16"	11/16"	1"	1"	1"
WEIGHT	4#	4#	7#	18#	90#

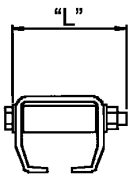
The standard hoist trolley is silver zinc plated. The hoist trolley for 4000# systems has a load-bar, and the load bar is painted black.



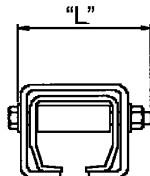
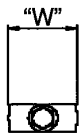
END STOP BUMPER (WITH HARDWARE)

PART NUMBER EXPLANATION:

02 - ES
 ES End Stop Bumper
 ESFS End Stop Bumper for Festoon Stack-up section
 ESADJ Adjustable End Stop Bumper
 Capacity (02 = 250#)



Type ES



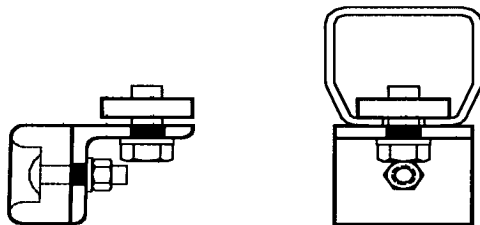
Type ESFS

CAPACITY	250#	500#	1000#	2000#	4000#
PART NO.	02ES	05ES	10ES	20ES	20ES
PRICE	\$9	\$9	\$15	\$15	\$15
W	2"	2"	2 1/2"	2 1/2"	2 1/2"
L	3 1/2"	3 1/2"	4"	4 1/2"	4 1/2"
WEIGHT	1#	1#	1#	1#	1#
PART NO.	02ESFS	05ESFS	10ESFS	20ESFS	20ESFS
PRICE	\$11	\$11	\$16	\$16	\$15
W	2"	2"	2 1/2"	2 1/2"	2 1/2"
L	4 1/4"	4 1/4"	5"	5 1/2"	5 1/2"
WEIGHT	1#	1#	1#	1#	1#

Hardware includes: 1/2"-13UNC hex head cap screw, nyloc hex nut, and 2 flat washers. Bumpers for festoon stack-up sections utilize longer bolts.

ADJUSTABLE END STOP BUMPER (For Use On Runways)

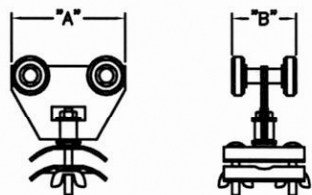
CAPACITY	250# - 500#	1000# - 4000#
PART NO.	05ESADJ	20ESADJ
PRICE	\$23	\$26
L	4 1/4"	4 1/4"
WEIGHT	2#	2#



Can be used as a secondary end stop. End stop bumpers are still required on ends of bridges and runways.

LodeRail™

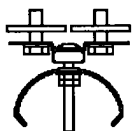
FESTOONING ACCESSORIES FESTOON TROLLEY for STEEL TRACK (see page 75 for Adders/Deducts for systems)



CAPACITY	250#	500#	1000#	2000#-4000#
PART NO.	02FT	05FT	10FT	20FT
PRICE	\$28	\$28	\$32	\$32
WEIGHT	1#	1#	2#	2#
DIMENSIONS	A=3" B= 1 11/16"	A=3" B= 1 11/16"	A=3" B= 2 3/16"	A=3 1/2" B= 2 5/8"

For use with flat, round cable or 1/2" air hose. Recommended spacing - One every 5' on bridges and every 6' on runways.

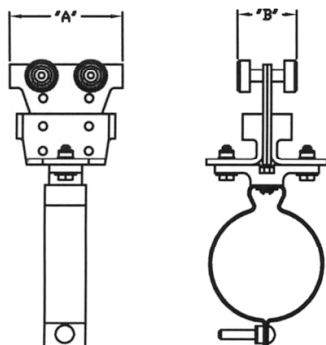
FESTOON CLAMP ASSEMBLY



CAPACITY	250# - 4000#
PART NO.	20FC
PRICE	\$19
WEIGHT	2#

For flat cable and air hose. Fits all track series.

VACUUM HOSE FESTOON TROLLEY



CAPACITY	250#	500#	1000#	2000#-4000#
PART NO.	02VHFT	05VHFT	10VHFT	20VHFT
PRICE	\$36	\$36	\$36	\$40
WEIGHT	2#	2#	3#	3#
DIMENSIONS	A=3" B= 1 11/16"	A=3" B= 1 11/16"	A=3" B= 2 3/16"	A=3 1/2" B= 2 5/8"

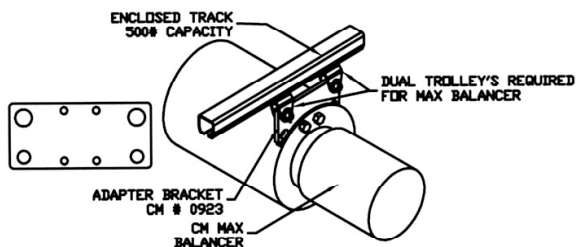
Recommended for vacuum hose use. One every 5' on bridge or 6' on runway. For use with maximum 5" dia. vacuum hose. Specify hose dia. when ordering.

VACUUM HOSE FESTOON CLAMP ASSEMBLY



CAPACITY	250# - 4000#
PART NO.	20VHFC
PRICE	\$26
WEIGHT	3#

MAX BALANCER ADAPTER BRACKET



PART NO.	0923
PRICE	\$103
WEIGHT	7#

*Mounting of max balancer requires two hoist trolleys (not included) and one adapter bracket.

FLAT CABLE AND PNEUMATIC HOSE

FC39393	#14-4 Flat Cable	\$2.00 per linear foot
801-8_Yellow	1/2" Pneumatic Hose	\$4.00 per linear foot

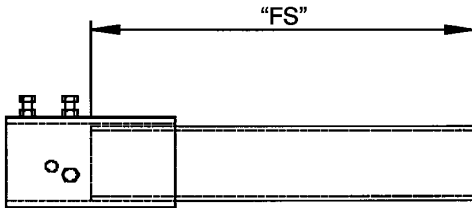
Weight and dimensions are approximate and may change without notice.

(5-15-06)

LodeRail™

**FESTOON STACK SECTION
For STEEL TRACK**

Allows trolleys to be stored without taking away from the available track space. Stack section is painted black.



PRICE INCLUDES: attachment hardware, end stop bumper, and one bolt for end stop bumper.

CAPACITY	250#	500#	1000#	2000#	4000#
PART NO.	02FS12	05FS12	10FS12	20FS12	20FS12
PRICE	\$46	\$46	\$62	\$75	\$75
L	12"	12"	12"	12"	12"
WEIGHT	8#	8#	16#	29#	29#
PART NO.	02FS18	05FS18	10FS18	20FS18	20FS18
PRICE	\$50	\$50	\$67	\$78	\$78
L	18"	18"	18"	18"	18"
WEIGHT	11#	11#	21#	38#	38#
PART NO.	02FS24	05FS24	10FS24	20FS24	20FS24
PRICE	\$54	\$54	\$75	\$98	\$98
L	24"	24"	24"	24"	24"
WEIGHT	14#	14#	29#	51#	51#
PART NO.	02FS36	05FS36	10FS36	20FS36	20FS36
PRICE	\$78	\$78	\$97	\$114	\$114
L	36"	36"	36"	36"	36"
WEIGHT	25#	25#	39#	69#	69#
PART NO.	02FS54	05FS54	10FS54	20FS54	20FS54
PRICE	\$83	\$83	\$101	\$120	\$120
L	54"	54"	54"	54"	54"
WEIGHT	25#	25#	39#	69#	69#
PART NO.	02FS63	05FS63	10FS63	20FS63	20FS63
PRICE	\$87	\$87	\$106	\$125	\$125
L	63"	63"	63"	63"	63"
WEIGHT	25#	25#	39#	69#	69#

CONDUCTOR BAR

Eliminate the need for festoon trolleys and festoon stack section.

Includes all components and hardware required for mounting.

Must be purchased at same time as system is purchased. If purchased separately – Apply.

Do not use festoon deduct when ordering conductor bar.

Conductor Bar (4-Bars Std.)..... \$15.00 per linear foot

Collector Assembly (4-Shoes Std.)..... \$239.00 each set of 4

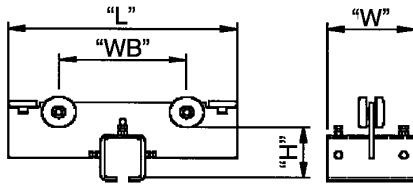
LodeRail™

STANDARD END TRUCK

For STEEL bridge lengths up to and including 23'

The standard End Truck is used on bridges of 23' or less. Extended End Trucks are for bridges of more than 23'.

Each bridge should have two end trucks, one clamping (suffix "ETS") and one non-clamping (suffix "ET").



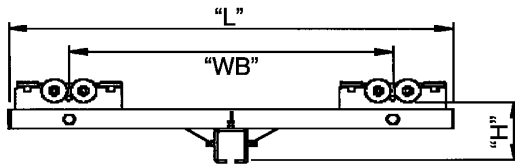
CAPACITY	250#	500#	1000#	2000#
PART NO.	02ET	05ET	10ET	20ET
PRICE	\$1,204	\$270	\$323	\$425
H	3 1/2"	3 1/2"	4 3/16"	5 3/4"
L	17 3/4"	17 3/4"	19 3/4"	23 5/8"
WB	10 5/8"	10 7/8"	11 1/4"	13 1/8"
W	7"	7"	8"	9"
WEIGHT	15#	15#	26#	46#

For mixed capacity end trucks add \$215.00 modification charge per pair.

EXTENDED END TRUCK

for STEEL Bridge lengths greater than 23' and all 4000# bridges.

Each bridge should have two end trucks, one clamping (suffix "ETLSS") and one non-clamping (suffix "ETLS").



CAPACITY	250#	500#	1000#	2000#	4000#
PART NO.	02ETLS	05ETLS	10ETLS	20ETLS	20ETLS
PRICE	\$408	\$585	\$657	\$797	\$797
H	5 3/4"	5 3/4"	6 3/4"	9"	9"
L	41"	41"	43 3/8"	60 1/2"	60 1/2"
WB	30"	30"	30"	44"	44"
W	14"	14"	16"	18"	18"
WEIGHT	53#	53#	72#	156#	156#

For mixed capacity end trucks add \$215.00 modification charge per pair.

BRIDGE BUFFER

Used with multiple bridge systems to separate bridges and prevent an overload condition. Buffer kits are painted the same color as the runways and are sold as a pair.

BRIDGE BUFFER ASSEMBLY

Bridge separation distance is based on the combined loads of the bridges and the support center distance of the runways. Please consult the factory for the exact dimensions for each application.

CAPACITY	250#	500#	1000#	2000#	4000#
PART NO.	02BB	05BB	10BB	20BB	20BB
PRICE/PAIR	\$368	\$407	\$509	\$755	\$755
WEIGHT	70#	70#	80#	90#	90#



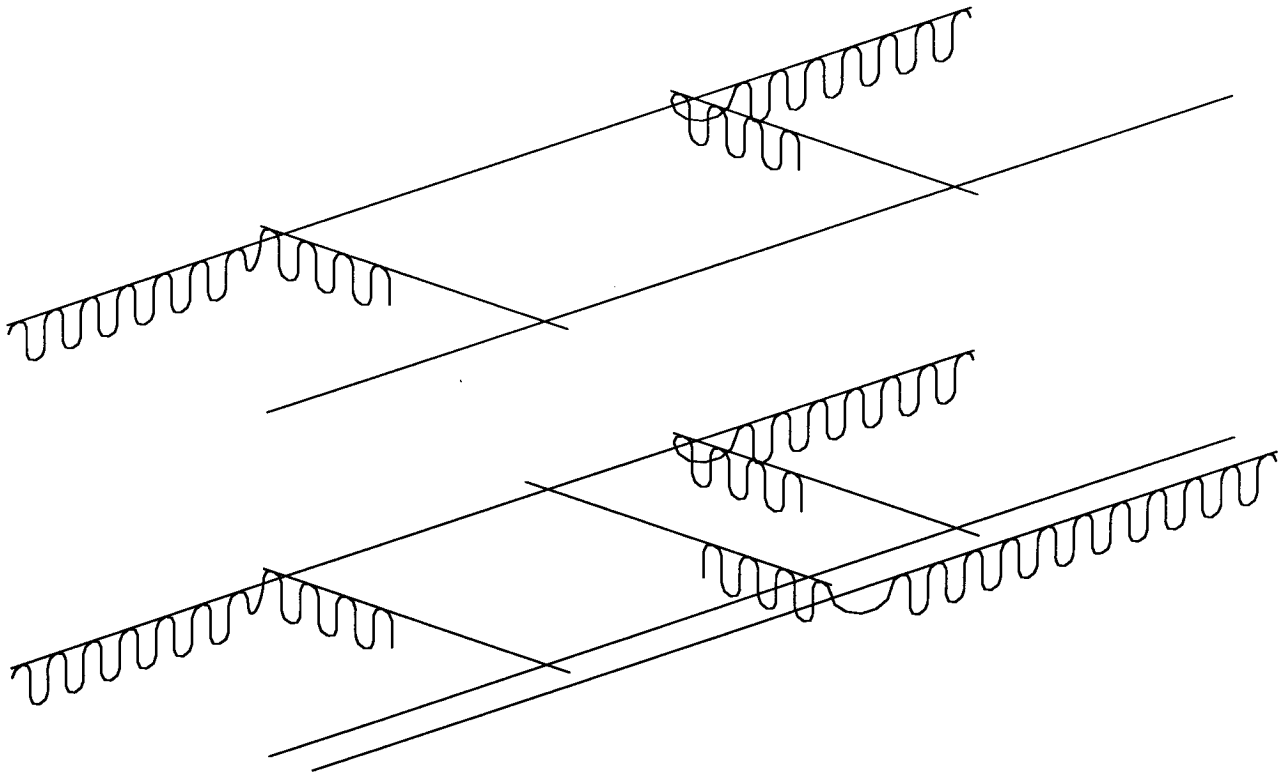
LodeRail™**TIPS FOR FESTOONING WITH
MULTIPLE BRIDGES****TWO BRIDGES:**

The most common method of bringing power to the two bridges is by bringing festooning in from both ends of the runway. Use the Festoon Adder/Deduct Chart (Page 75) to add additional festooning to a system.

THREE OR MORE SYSTEMS:

Option 1:
Conductor bar (contact factory for pricing) can be used with collector shoes to bring power to the bridges. As a rule the conductor bar is the most practical and economical choice on systems with three (3) or more bridges and/or runways exceeding 100 feet.

Option 2:
A festoon support (a separate 250# series track or messenger wire system) can be attached off to one side of the runway or runways.





ADDERS/DEDUCTS FOR FESTOONING – Use when ordering complete systems ONLY.

Standard work area bridge crane systems include bridge and runway festooning:

- 1) Festoon Trolleys
- 2) 4 - Conductor flat cable OR 1/2" air hose, (total length = runway length + bridge length + 10')
- 3) 2 festoon clamps
- 4) 1 festoon stack-up section

Recommendations and Guidelines for Festooning:

- 1) LodeRail uses Festoon Trolleys for all applications and all runway lengths.
- 2) Vacuum Hose Trolleys are available for up to 5" diameter vacuum hose.
- 3) For festooning package pricing sold separately from bridge crane systems, purchase individual components.**

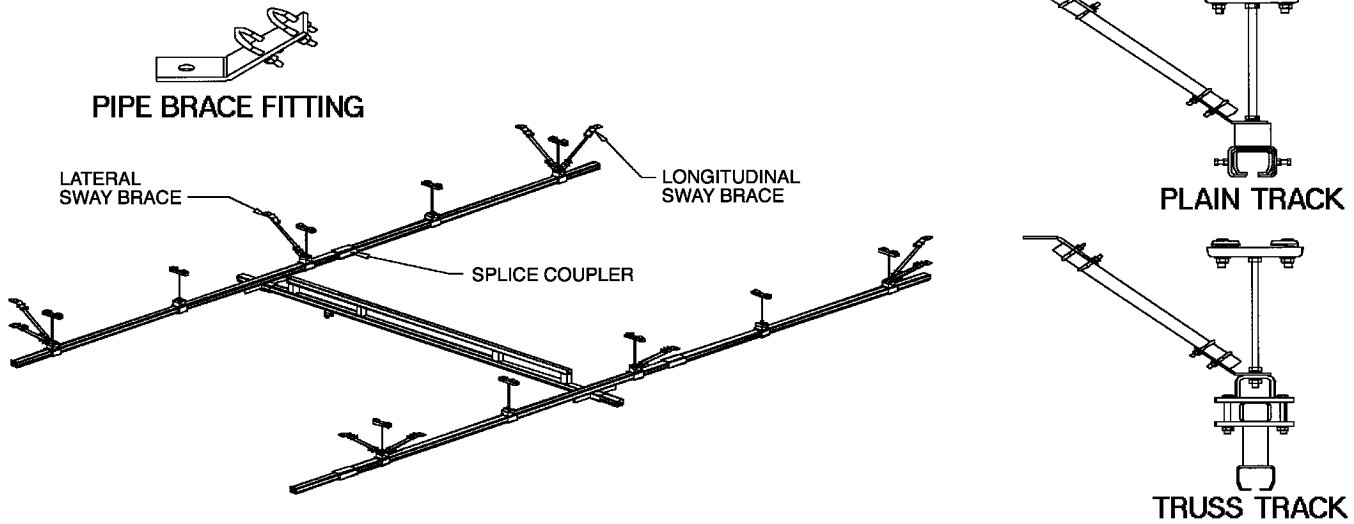
	8' Bridge Length	10' Bridge Length	15' Bridge Length	20' Bridge Length
RUNWAY LENGTH	No Festooning (Adder)	No Festooning (Adder)	No Festooning (Adder)	No Festooning (Adder)
11' - 6	<\$169>	<\$177>	----	----
23'	<\$202>	<\$210>	<\$230>	<\$246>
28'	<\$218>	<\$235>	<\$252>	<\$265>
33'	<\$236>	<\$246>	<\$265>	<\$279>
43'	<\$271>	<\$280>	<\$299>	<\$315>
53'	<\$300>	<\$308>	<\$327>	<\$342>
63'	<\$331>	<\$324>	<\$357>	<\$371>
78'	<\$532>	<\$541>	<\$573>	<\$655>
83'	<\$711>	<\$740>	<\$800>	<\$835>
93'	<\$781>	<\$803>	<\$879>	<\$928>
103'	<\$854>	<\$882>	<\$942>	<\$977>

	23' Bridge Length	28' Bridge Length	34' Bridge Length
RUNWAY LENGTH	No Festooning (Adder)	No Festooning (Adder)	No Festooning (Adder)
11' - 6	----	----	----
23'	<\$256>	<\$279>	<\$284>
28'	<\$279>	<\$286>	<\$294>
33'	<\$291>	<\$305>	<\$331>
43'	<\$324>	<\$343>	<\$365>
53'	<\$352>	<\$371>	<\$394>
63'	<\$384>	<\$402>	<\$425>
78'	<\$643>	<\$671>	<\$724>
83'	<\$865>	<\$900>	<\$982>
93'	<\$940>	<\$985>	<\$1053>
103'	<\$1,008>	<\$1,066>	<\$1,127>

NOTE:
 'No festooning' deduct is also used as the adder for additional festooning on mixed capacity systems.

LodeRail™

SWAY BRACE KITS – Use in ordering with complete systems ONLY.



Reasons for Sway Bracing

LodeRail Ceiling Mounted Bridge Cranes require bracing to help prevent damaging lateral and longitudinal movements. Sway bracing will reduce lateral stresses on hangers and hanger rods and keep runways securely positioned for smooth operation. The added rigidity provided by sway bracing will also help prevent hardware from loosening.

Guidelines for Applying Sway Bracing

The amount of sway bracing is typically determined by a combination of the length of the system and the distance of the drop from the ceiling. LodeRail recommends sway bracing any system that uses a threaded rod drop. If a “threaded rod drop is used, all four corners of the system should be braced both laterally and longitudinally,” and the system should be braced on both sides at the hanger points nearest the splice joints.

NOTE: Actual sway brace requirements will vary from system to system. For drops longer than 6 feet. LodeRail recommends that structural tubing or angle be used for increased rigidity (sway bracing is still required).

Sway brace fitting kits are priced below based on the above recommendations.

Each kit includes top and bottom fittings for each sway brace. 1" pipe (by others) is not included.

Runway Length	Track Style					
	Plain Track*			Trussed Track		
	Quantity Each	Weight	Price Per Kit	Quantity Each	Weight	Price Per Kit
11'-6"	16	16 #	\$249	16	16 #	\$249
23'	16	16 #	\$249	16	16 #	\$249
33'	20	18 #	\$317	20	18 #	\$317
43'	20	18 #	\$317	20	18 #	\$317
53'	24	20 #	\$383	24	20 #	\$383
63'	24	20 #	\$383	24	20 #	\$383
83'	28	22 #	\$443	28	22 #	\$443
103'	32	24 #	\$505	32	24 #	\$505

Runway Length	Track Style					
	Trussed Track			Trussed Track		
	Quantity Each	Weight	Price Per Kit	Quantity Each	Weight	Price Per Kit
28'	16	16 #	\$249	----	----	----
33'	----	----	----	16	16 #	\$249
53'	20	18 #	\$317	----	----	----
63'	----	----	----	20	18 #	\$317
78'	24	20 #	\$383	----	----	----
93'	----	----	----	24	20 #	\$383
103'	28	22 #	\$443	----	----	----
123'	----	----	----	28	22 #	\$443

*Based on 20' track length.